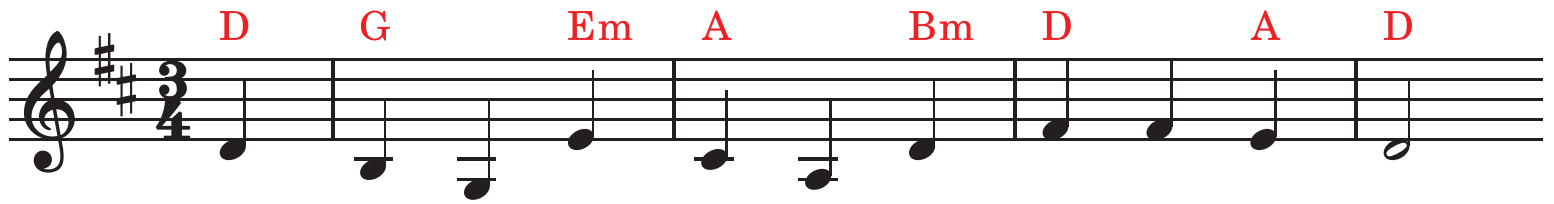
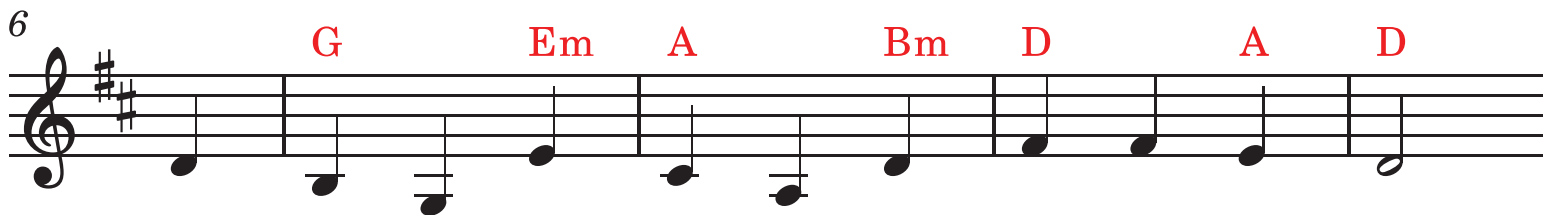


# Immortal, Invisible, God Only Wise

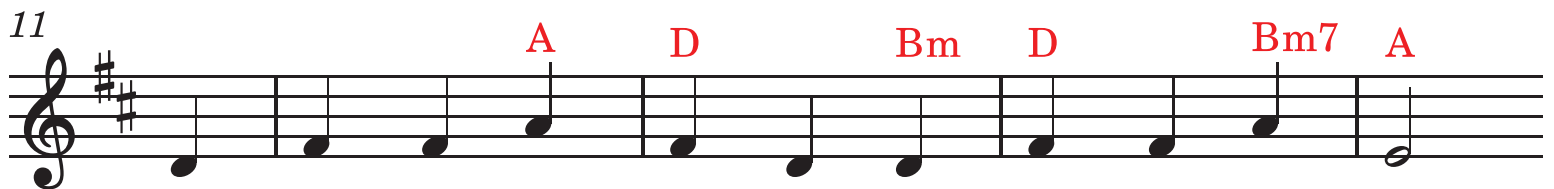
Key: D (Guitar option: capo 1-5, may use Em7/B instead of Bm)



1. Im - mor-tal, in - vi - si - ble, God on - ly wise,
2. Un - res - ting, un - has - ting, and si - lent as light,
3. To all life Thou giv - est, to both great and small;
4. Great Fa - ther of glo - ry, pure Fa - ther of light,



In light in - ac - ces - si - ble hid from our eyes,  
Nor wan - ting, nor was - ting, Thou ru - lest in might;  
In all life Thou liv - est, the true life of all;  
Thine an - gels a - dore Thee, all veil - ing their sight;



Most bles - sed, most glo - rious, the An - cient of Days,  
Thy jus - tice, like moun-tains, high soar - ing a - bove  
We blos - som and flour-ish as leaves on the tree,  
All praise we would ren - der, O help us to see



Al - migh - ty, vic - to - rious, Thy great name we praise.  
Thy clouds, which are foun-tains of good - ness and love.  
And wi - ther and pe - rish—but nought chang-est Thee.  
'Tis on - ly the splen-dor of light hi - deth Thee!