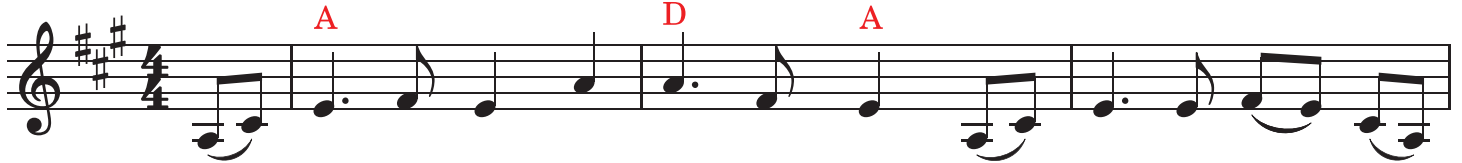


There Is a Fountain

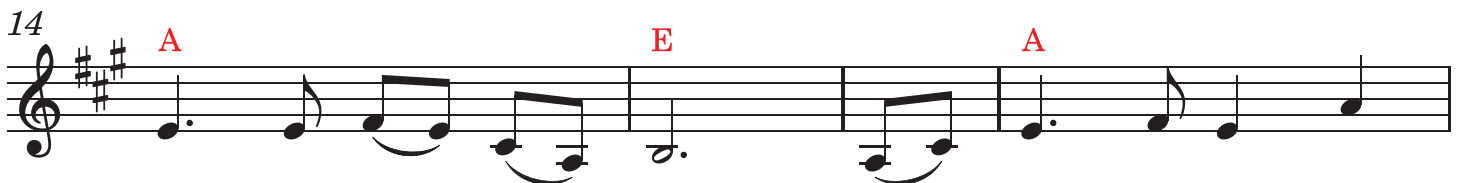
Key: A (Guitar option: G capo 2)



5. When this poor, lisp - ing, stam - m'ring tongue Lies si - lent in the



And sin - ners plunged be - neath that flood Lose
And there may I, though vile as he, Wash
Till all the ran - somed church of God Be
Re - deem - ing love has been my theme, And
Then in a no - bler, sweet - er song, I'll



And sin - ners plunged be -
And there may I, though
Till all the ran - somed
Re - deem - ing love has
Then in a no - bler,

