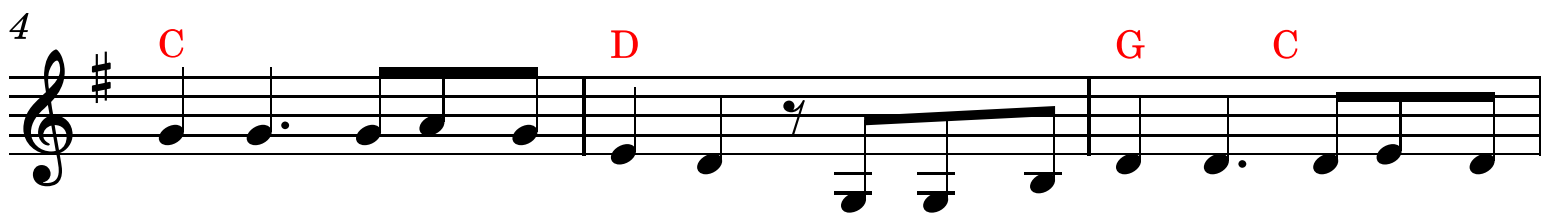


I Have Decided to Follow Jesus

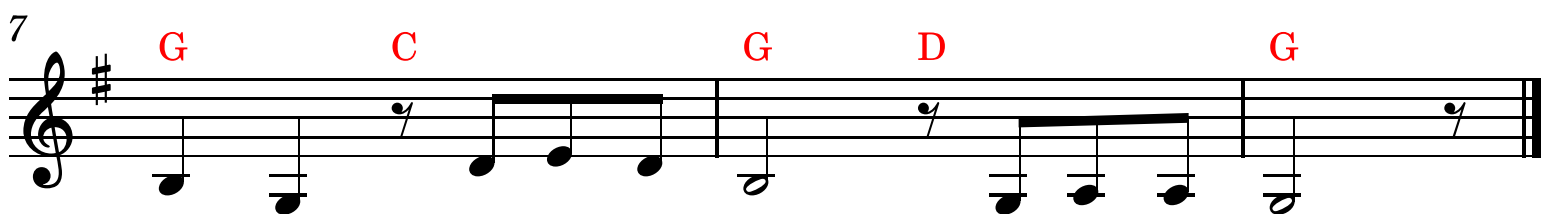
Key: G (Guitar: capo 2 to 4?)



1. I have de - cid - ed to fol - low Je - sus, I have de -
2. The world be - hind me, the cross be - fore me, The world be -
3. Tho'none go with me, I still will fol - low, Tho'none go
4. Will you de - cide now to fol - low Je - sus? Will you de -



cid - ed to fol - low Je - sus, I have de - cid - ed to fol - low
hind me, the cross be - fore me, The world be - hind me, the cross be -
with me, I still will fol - low, Tho'none go with me, I still will
cide now to fol - low Je - sus? Will you de - cide now to fol - low



Je - sus, No turn-ing back, no turn-ing back.
fore me, No turn-ing back, no turn-ing back.
fol - low, No turn-ing back, no turn-ing back.
Je - sus? No turn-ing back, no turn-ing back.

Copyright: Public Domain